

LEGEND OF MATERIALS

SIGN	DESCRIPTION	DIMENSIONS	AMOUNT	NOTE
CB2	CEILING BEAM	7 500 x 160 x 230	53	
CB5	CEILING BEAM	5 500 x 160 x 230	12	
CB6	CEILING BEAM	5 250 x 160 x 230	60	
CB8	CEILING BEAM	3 500 x 160 x 230	12	
CB9	CEILING BEAM	4 500 x 160 x 230	10	
CC1	CEILING CARTRIDGE	250 x 525 x 190	3148	
CC2	CEILING CARTRIDGE	250 x 400 x 190	207	
CC3	CEILING CARTRIDGE	250 x 525 x 80	51	
CR	CEILING REINF.	130 x 150	249.5 m	4 x R10 / R6

- RR

CEILING BRACING, additional reinforcement, 200 x 130 mm, 4 x R10, stirrups R6
- IS

INSTALLATION SHAFT, bathroom installation shaft, 500 x 200 mm
- CCR

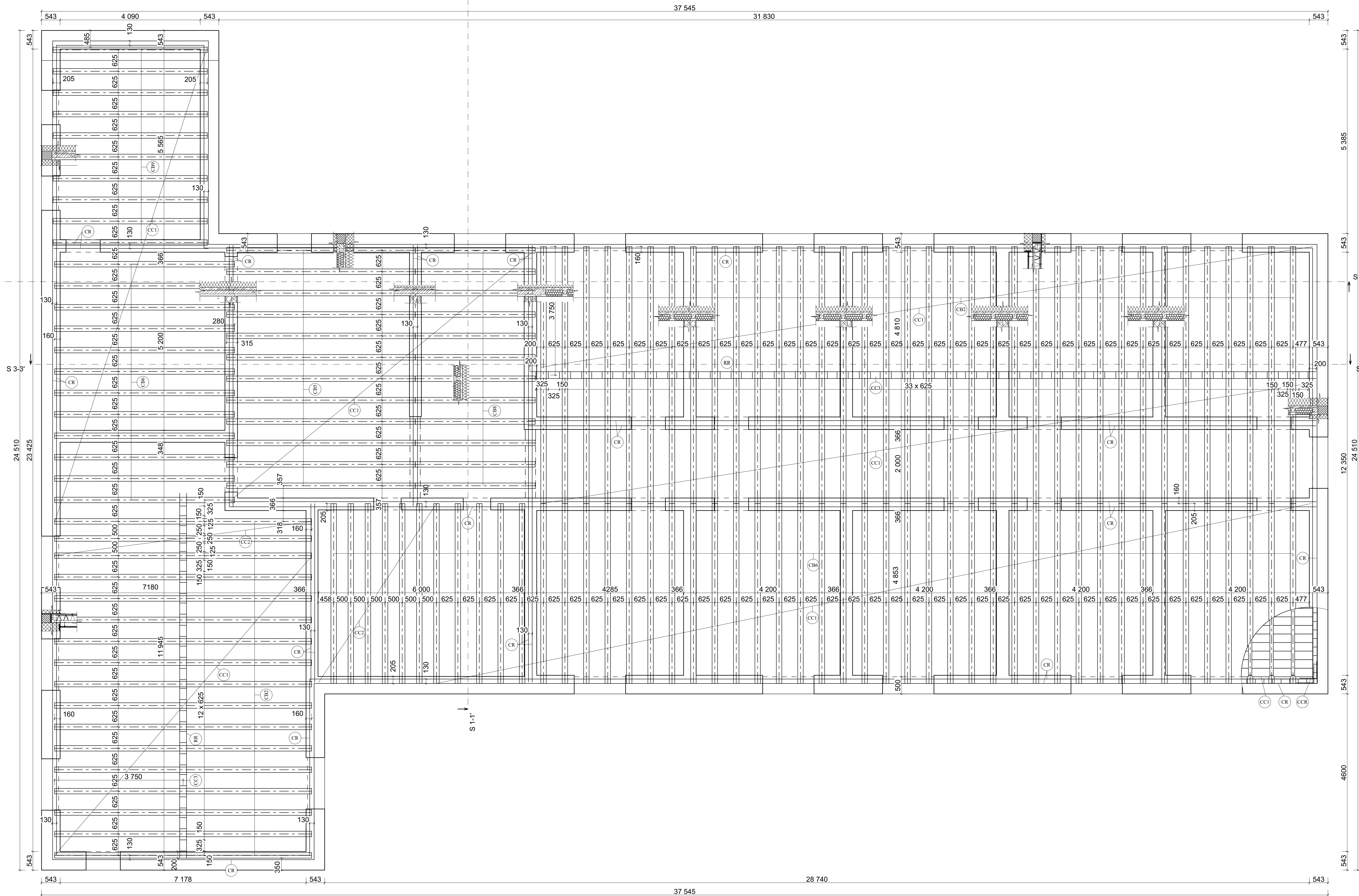
CEILING CORNER REINFORCEMENT, B500B, 4 x R10, 500 mm
- CR

CEILING REINFORCEMENT, B500B, 150 x 130 mm, 4 x R10, stirrups R6/200 mm
- CC

CEILING CARTRIDGE, 625 or 500 mm
- CB

CEILING BEAM, 3500 to 7750 mm

- ALL CEILINGS IN THE SAME HEIGHT:
BOTTOM +6.803
TOP +7.053



- NOTES:
- REINFORCEMENT RING IS LOCATED ON TOP OF ALL LOAD-BEARING WALLS AND MUST COMPLY WITH STATIC CALCULATION
 - CURRENT RING COMPLIES WITH MANUFACTURER RECOMMENDATIONS AND CAN BE SEEN IN THE CORNER FULL VIEW OF THE CEILING, DETAILS IN THE DRAWINGS AND ANNEXES D.1.1.03, D.1.1.04, D.1.1.05, D.1.2.04, D.1.2.09, D.1.2.18
 - FOR BETTER ORIENTATION HEIGHT OF CEILINGS NOT AVAILABLE IN THE DRAWING
 - ALL CEILINGS IN THE SAME HEIGHT:
BOTTOM +3.545
TOP +3.920
 - CEILING BRACING RECOMMENDED FOR ALL CEILING BEAMS LONGER THAN 6 250 mm
 - MORE DETAILS ABOUT REINFORCEMENT ELEMENTS CAN BE SEEN IN THE ANNEX FOLDER n. 7
 - EXACT DIMENSIONS OF INSTALLATION SHAFTS ARE SPECIFIED ACC. TO TECHNICAL NEEDS AND MODIFIED DURING THE CONSTRUCTION
 - MIN. OVERLAY OF CEILING BEAMS ON WALL IS 125 mm
 - RING REINFORCEMENT DESIGNED ACCORDING TO HELUZ STANDARDS, BARS 4x10 mm
 - REAL DIMENSION MUST COMPLY WITH STATIC DESIGN CALCULATION
 - GROUTING CONCRETE C20/25 XC1, CONSISTANCY S3, WITH REINFORCEMENT MESH DIAMETER 4/50
 - ADDITIONAL REINFORCEMENT B500B - STATIC CALCULATION REQUIRED
 - MANUFACTURER INSTRUCTION MUST BE FOLLOWED DURING MANIPULATION AND INSTALLATION
 - SPACING BETWEEN CEILING BEAMS ARE FILLED WITH CEILING CARTRIDGES SUITABLE FOR SPACE 625 OR 500 mm
 - SPECIAL CEILING CARTRIDGES USED UNDER REINFORCEMENT RIB, MIAKO K, HEIGHT 80 mm
 - CEILING BEAMS MUST BE SUPPORTED IMMEDIATELY AFTER THEIR FITTING BY LINEAR SUPPORTS AND POSTS
MAXIMAL DISTANCES MUST BE MET - LINEAR SUPPORTS - MAX 1800 mm
- POSTS - MAX 1500 mm
 - LINEAR SUPPORTS AND POSTS CAN BE REMOVED CIRCA 4 WEEKS AFTER PLACEMENT OF GROUTING LAYER
 - REMOVAL OF LINEAR SUPPORTS AND POSTS MUST BE DONE FROM THE TOP FLOOR TO THE BOTTOM
 - SYMBOL OF INSTALLATION SHAFT SHOWN IN THE DRAWING SUGGESTS SUITABLE LOCATION FOR DRILLING
 - ALL CEILING BEAMS PLACED ON LAYER OF WATERPROOFING SIS BITUMEN FELT

0.000 = 162.00 m.a.s.l., B.H.S. / COORDINATE SYSTEM S-JTSK

TYPE OF WORK	DIPLOMA THESIS	<div><div>T</div><div>FAMILY</div><div>STAVEBNÍ</div><div>ENTAV</div><div>posominho staviteľstvo</div></div>
DRAWN BY	Bc. Richard Šaško	
SUPERVISED BY	Ing. Karol Šimulda	
CUSTOMER	John Davidson, Severovozna 2888/9, 902 00, Petržalka-Slnec hora	
SITE LOCATION	Severovozna 2888/9, 902 00 Petržalka-Slnec hora	<div><div>PAPER FORMAT</div><div>A4</div><div>16" x A4</div></div> <div><div>DATE</div><div>01/2019</div></div> <div><div>PHASE</div><div>DPS</div></div> <div><div>SCALE</div><div>1:50</div></div> <div><div>DRAWING NO.</div><div>D.1.1.03</div></div>
PROJECT TITLE	HOTEL	
BUILDING OBJECT	H-1 HOTEL	
PART	D.1.1 - Building Construction Solution	
DRAWING TITLE:	CEILING 2 nd ABOVE GROUND FLOOR	